

The background features a blue gradient with several circular gauges and arrows. One large gauge on the left has numerical markings from 140 to 260. Other gauges are smaller and scattered across the scene. Arrows of various sizes and orientations are also present, some pointing clockwise and others counter-clockwise. The overall aesthetic is technical and modern.

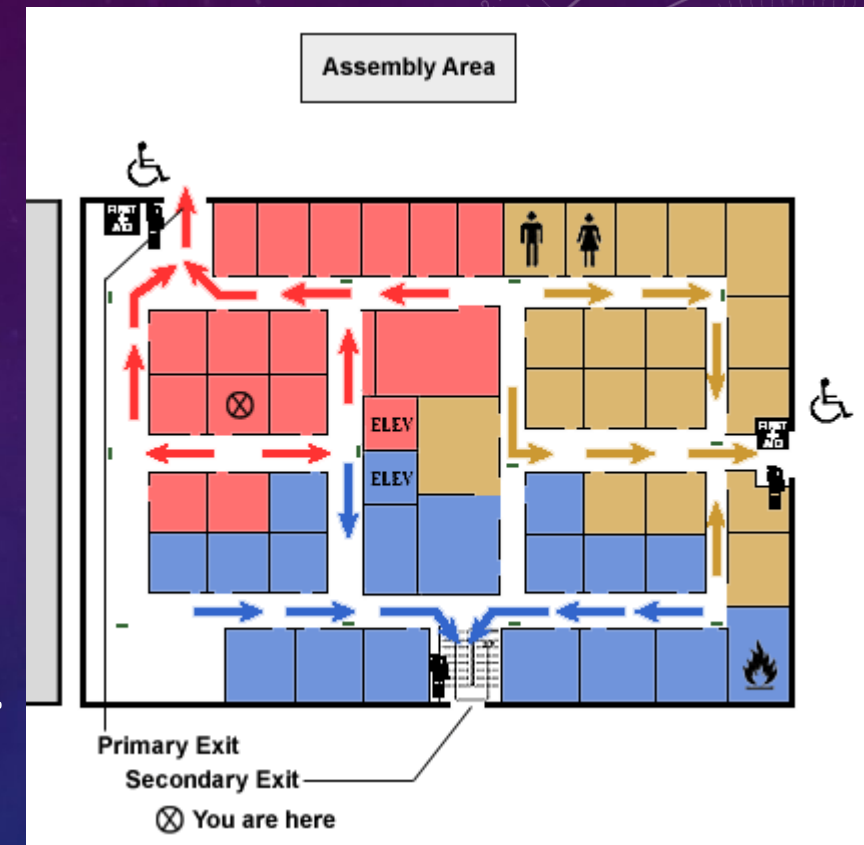
EMERGENCY ACTION

29 CFR 1910.33

NFPA 101-2000 LIFE SAFETY CODE

EMERGENCY EXITS

- 1. All exit routes must be permanent.
- 2. An exit must be separated by fire resistant materials.
- 3. Openings into an exit must be limited.
- 4. Two exit routes. At least two exit routes must be available in a work place to permit prompt evacuation.



EMERGENCY EXITS

- Emergency exits must be illuminated. The letters must be not less than 6" tall and at least $\frac{3}{4}$ " wide.
- Emergency exit doors must open out and be self closing and never locked.
- Overhead doors are not to be used as emergency exits.
- Exit routes must be kept free of obstructions.
- If the direction of travel to the exit will pass other doors they must be marked "not an exit."
- Depression of panic bar must open the exit without prior action.

EMERGENCY EXITS

- Each exit discharge must lead directly outside or to a street, walkway, refuge area, public way, or open space with access to outside.
- Exit routes must support the maximum permitted occupant load for each floor served.
- Exit routes must be at least 28 inches wide at all points.
- Exit routes must be kept free of explosive or highly flammable furnishings or other decorations.
- Lighting and markings must be adequate and appropriate.
- Exit routes must be maintained during construction.

EMERGENCY ACTION PLANS

Emergency action plans must be kept in writing, kept in the workplace, and available to employees for review.



EMERGENCY ACTION PLANS MUST INCLUDE PROCEDURES FOR:

- reporting a fire or other emergency
- emergency evacuation, including type of evacuation and exit route assignments
- employees who remain to operate critical plant operations before evacuating
- accounting for all employees after evacuation
- employees performing rescue or first aid
- obtaining more information about the plan or duties

EMPLOYEE ALARM SYSTEM



- An employer must have and maintain an employee alarm system.
- The employee alarm system must use a distinctive signal for each purpose.
- We use the telephone paging system to signal a fire alarm

TRAINING



- Employer must designate and train employees to assist in the safe and orderly evacuation of other employees.
- Employer must review the emergency action plan with each employee covered by the plan.
- We use the annual Fire & Tornado Drill review and actual drill as the review and training.

EMERGENCIES WILL HAPPEN

- We need to always be aware of our surroundings and plan for the worst while hoping for the best.